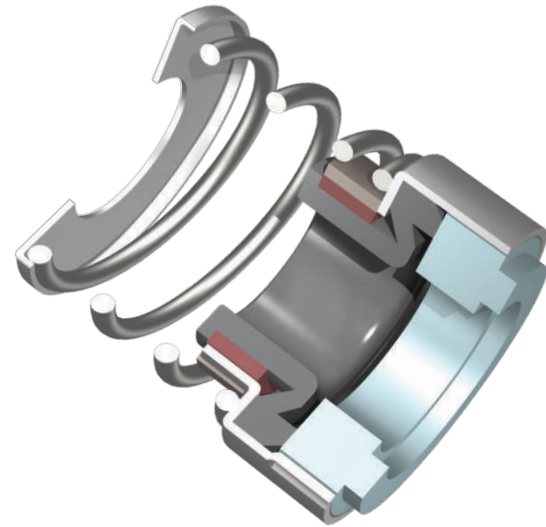


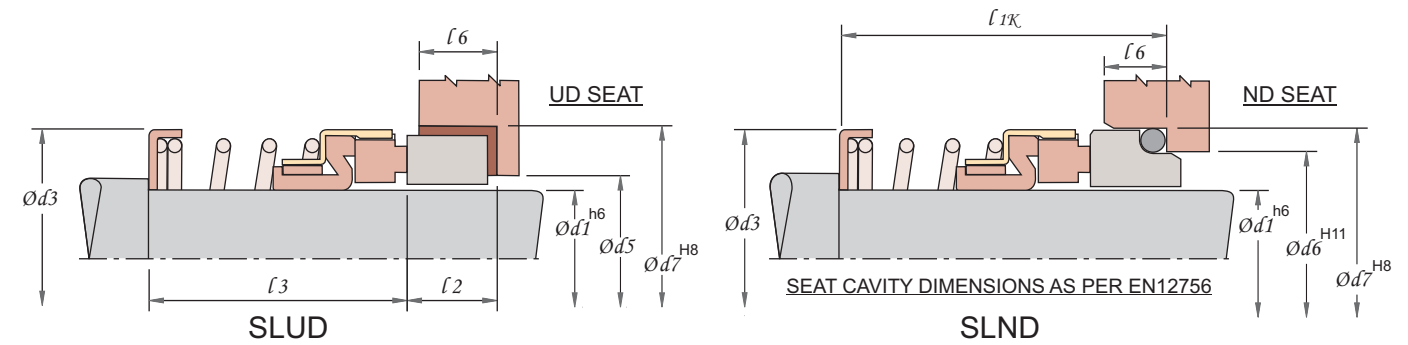
SL ELASTOMERIC BELLOW SEAL

- LOW COST, MASS PRODUCED
- SELF ALIGNING DESIGN
- NON CLOGGING COIL SPRING
- BIDIRECTIONAL ROTATION
- POSITIVE METAL BAND DRIVE
- FITS ON ANSI, ISO & DIN PUMPS



APPLICATIONS:

- CLEAN WATER
- SEWAGE APPLICATION
- GEAR PUMPS
- VACUUM PUMPS



SLUD (INCH SIZES)

SEAL CODE	d1	d3	d5	d7	l2	l3	l6
0127	12.70	24.00	15.0	25.40	7.9	20.6	6.3
0158	15.87	27.00	19.0	31.75	10.3	22.2	8.7
0190	19.05	31.50	21.0	34.92	10.3	22.2	8.7
0222	22.22	33.50	23.0	38.10	10.3	23.8	8.7
0254	25.40	39.50	26.0	41.30	11.1	25.4	9.5
0285	28.57	42.20	30.0	44.50	11.1	27.0	9.5
0317	31.75	45.70	35.0	47.62	11.1	27.0	9.5
0349	34.92	49.10	38.1	50.80	11.1	28.6	9.5
0381	38.10	52.40	41.3	54.00	11.1	28.6	9.5
0412	41.27	57.50	44.5	60.33	12.7	33.5	11.1
0444	44.45	61.20	47.6	63.50	12.7	35.0	11.1
0476	47.62	64.40	50.8	66.68	12.7	38.1	11.1
0508	50.80	73.30	54.0	69.85	12.7	40.5	11.1
0539	53.97	73.50	57.0	73.05	13.6	41.0	12.0
0571	57.15	78.50	60.0	76.20	13.6	41.0	12.0

SEAL CODE	d1	d3	d5	d7	l2	l3	l6
0603	60.32	82.30	63.5	79.40	13.6	41.0	12.0
0635	63.50	85.00	66.5	82.55	13.6	41.0	12.0
0666	66.67	88.90	70.0	92.10	15.9	49.2	14.3
0698	69.85	95.30	73.0	95.25	15.9	49.2	14.3
0730	73.02	98.40	76.5	98.45	15.9	52.5	14.3
0762	76.20	101.60	79.5	101.60	15.9	52.5	14.3
0793	79.37	104.80	82.5	111.15	19.9	55.5	18.3
0825	82.55	108.00	85.5	114.30	19.9	55.5	18.3
0857	85.72	114.30	89.0	117.50	19.9	55.5	18.3
0889	88.90	117.50	92.0	120.65	19.9	55.5	18.3
0920	92.07	120.70	95.5	123.85	19.9	58.7	18.3
0952	95.25	123.80	98.5	127.00	19.9	58.7	18.3
0984	98.42	127.00	101.5	130.20	19.9	62.0	18.3
1016	101.6	130.20	105.0	133.35	19.9	62.0	18.3

ALL DIMENSIONS IN MM

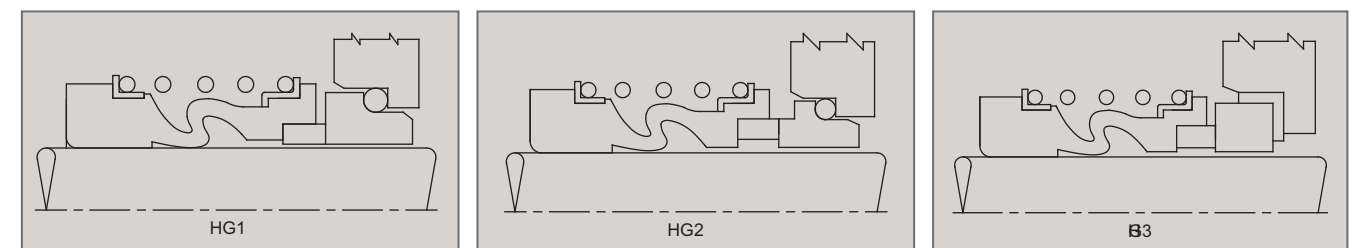
SLND (METRIC SIZES)

SEAL CODE	d1	d3	d6	d7	l1κ	l6
0120	12.00	21.40	19.0	23.0	32.5	5.5
0160	16.00	26.70	23.0	27.0	35.0	5.5
0180	18.00	30.35	27.0	33.0	37.5	7.0
0200	20.00	31.75	29.0	35.0	37.5	7.0
0220	22.00	33.50	31.0	37.0	37.5	7.0
0240	24.00	38.30	33.0	39.0	40.0	7.0
0250	25.00	38.30	34.0	40.0	40.0	7.0
0280	28.00	42.30	37.0	43.0	42.5	7.0
0300	30.00	43.90	39.0	45.0	42.5	7.0
0320	32.00	45.70	42.0	48.0	42.5	7.0
0330	33.00	46.80	42.0	48.0	42.5	7.0
0350	35.00	49.10	44.0	50.0	42.5	7.0

SEAL CODE	d1	d3	d6	d7	l1κ	l6
0380	38.00	52.40	49.0	56.0	45.0	8.0
0400	40.00	55.70	51.0	58.0	45.0	8.0
0430	43.00	58.80	54.0	61.0	45.0	8.0
0450	45.00	61.20	56.0	63.0	45.0	8.0
0480	48.00	64.40	59.0	66.0	45.0	8.0
0500	50.00	67.40	62.0	70.0	47.5	8.5
0530	53.00	70.70	65.0	73.0	47.5	8.5
0550	55.00	71.65	67.0	75.0	47.5	8.5
0580	58.00	77.90	70.0	78.0	52.5	8.5
0600	60.00	78.40	72.0	80.0	52.5	8.5
0630	63.00	81.50	75.0	83.0	52.5	8.5
0650	65.00	84.30	77.0	85.0	52.5	8.5

DIMENSIONS FOR HIGHER SIZES AVAILABLE ON REQUEST

DESIGN VARIATIONS



LIMITING PARAMETERS

PRESSURE	TEMPERATURE	SPEED
UPTO 10 BAR	- 20°C TO 200°C DEPENDING UPON ELASTOMER	26 m/sec

MATERIALS

METAL PARTS	FACE COMBINATIONS ROTARY STATIONARY	ELASTOMERS
SS304	CARBON NIR, CER, SiC, TC	VITON
	SiC SiC	NEOPRENE, EPDM
	TC SiC, TC	NBR, BUNA-N